

17. Coulomb's Law

The force, F , between two objects with charge q_1 and q_2 , is given by:

$$F = -\frac{k q_1 q_2}{r^2}, \text{ where } r = \text{distance between the two charges in meters}$$

$$k = \text{Coulomb's constant} = 9 \times 10^9 \text{ Nm}^2/\text{C}^2.$$

Example 1 Charges of $80 \times 10^{-6} \text{ C}$ and $70 \times 10^{-6} \text{ C}$ are 0.5 m apart. How much force repels these like-charges?¹

Example 2 There is a direct relationship between quantity of charge and force of repulsion or attraction. What do we mean by that? Show mathematically and graphically.

Example 3 There is an inverse relationship between charge separation and force of repulsion or attraction. What do we mean by that? Show mathematically and graphically.

Example 4 By what factor would the attractive force between two oppositely charged objects increase if we decreased the distance between them to 1/3 of the original distance?

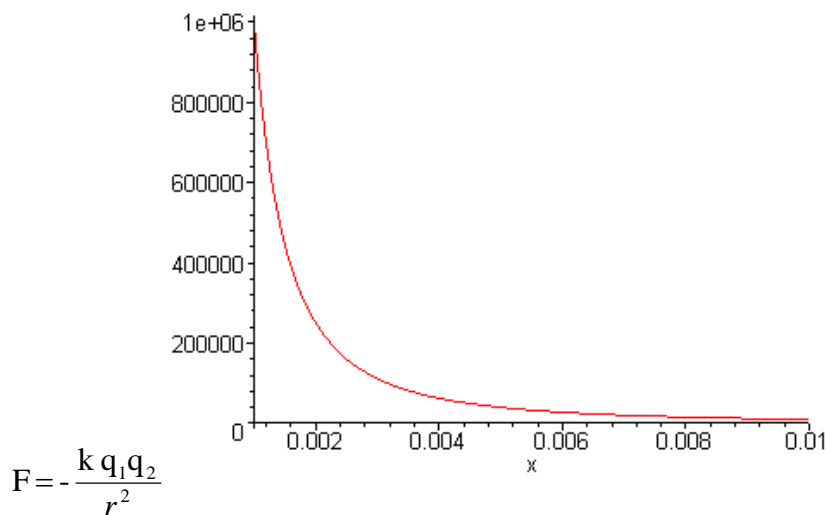
¹ -**201.6 N** Note that sometimes the formula is shown without the negative sign. The (-) sign produces a positive(attractive) force. For like charges, the formula yields a negative(repulsive) force .

Material World: Electricity

Example 5 The distance between two charges was doubled. And yet the force of attraction still tripled. What happened to one of the charges, if the other remained the same?

Exercises

1. Charges of $5.0 \times 10^{-5} \text{ C}$ (or $50 \times 10^{-6} \text{ C} = 50\mu\text{C}$) and $70 \times 10^{-6} \text{ C}$ are 0.30 m apart. How much force repels these like- charges?²
2. What happens to the force between two charges if the distance separating them triples?
3. What happens to the force between two charges if the amount of charge triples in each case?
4. What happens to the force between two charges if one of the charges is replaced by one that is only half as charged and it is also twice as far from the original charge?
5. If the repulsive force between two objects is to remain the same, and if one object's charge becomes sixteen times bigger, what distance should separate the charges?
6. If the following is a graph of Coulomb's Law, what do x and y represent from the formula



² -350 N (Note: 50×10^{-6} or 50 microCoulombs is the same as $= 5.0 \times 10^{-5}$)

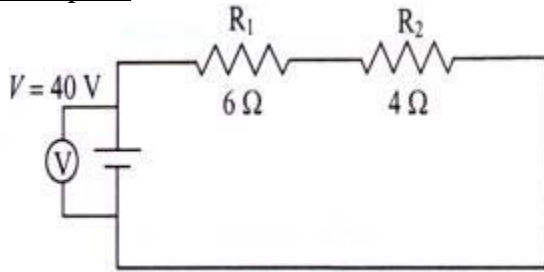
Material World: Electricity

18. Kirchoff's Laws: A- Parallel and Series Circuits

A summary of Simple Circuits:

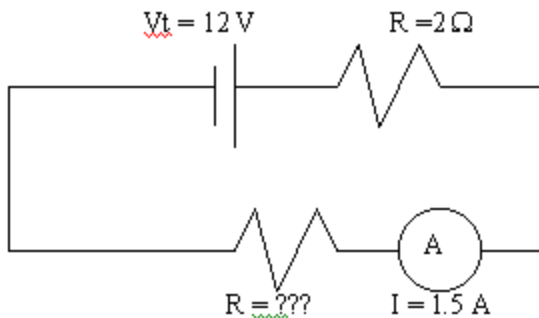
Variable	Series	Parallel
resistance	$R_T = R_1 + R_2 + \dots$	$1/R_T = 1/R_1 + 1/R_2 + \dots$
voltage	$V_T = V_1 + V_2 + \dots$	constant
current	constant	$I_T = I_1 + I_2 + \dots$
Ohm's Law	$V_T = I R_T$	$V = I_T R_T$

Example 1



- a. What is the total resistance of the circuit?
- b. What current would be measured in between the two resistors?
- c. What voltage (V_1) would be measured across R_1 ? Across R_2 ?

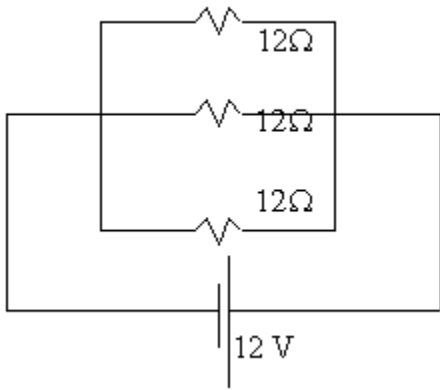
Example 2



- a. Find the missing resistance in the circuit shown, which consists of a 12 V battery hooked to two resistors.
- b. If the two resistors represented two light bulbs, and one of the light bulbs was off, would you be able to turn the other bulb on?

Material World: Electricity

Example 3

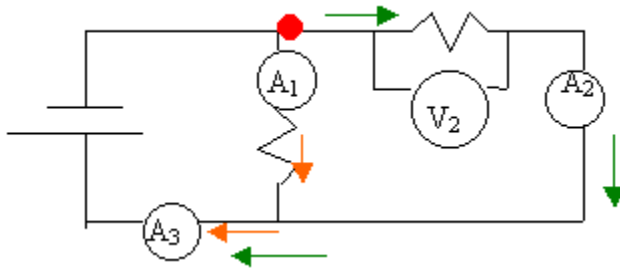


- What is the total resistance of the circuit?
- What is the total current?
- What voltage (V_1) would be measured across each individual resistor?
- What current is drawn out by each resistor?

Example 4

The drawing seems confusing, but note that it is a parallel circuit because the electrons have a “choice”. At the junction (shown by the red dot) the electrons either follow the green route or the orange route.

Use $I_1 = 1\text{A}$; $I_2 = 0.5\text{ A}$; $R_1 = 10\ \Omega$.



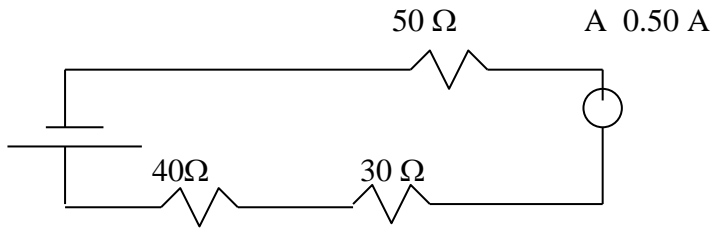
- Find V_2 .
- Find R_2 .
- Use two methods to arrive at R_T .
- Find the total resistance and the voltmeter reading at each resistor:

Exercises

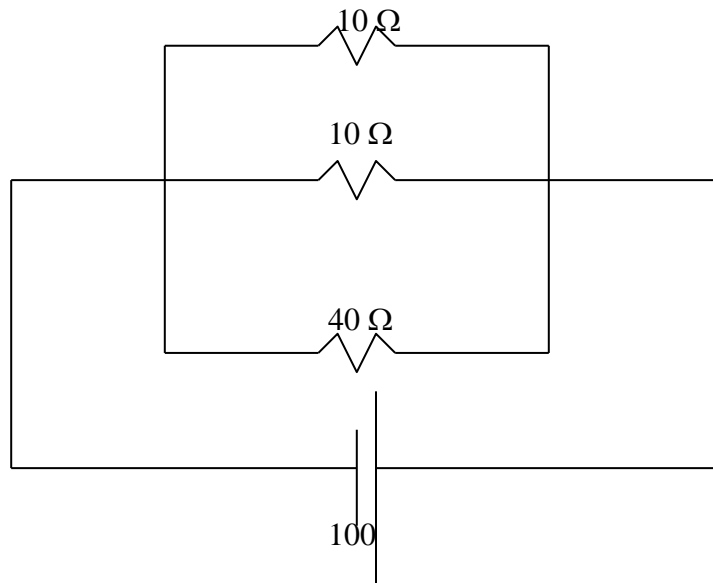
Material World: Electricity

1. Find either the missing voltage or missing current

a)



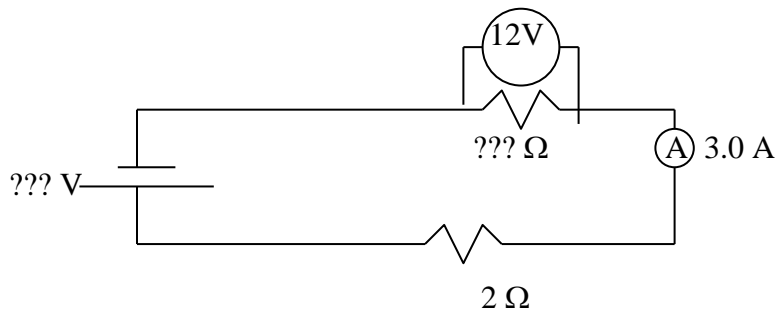
b)



2. Two resistors are connected in parallel. Each draws 2.0 A of current. If the total voltage is 12 V, find R_1 and R_2 .

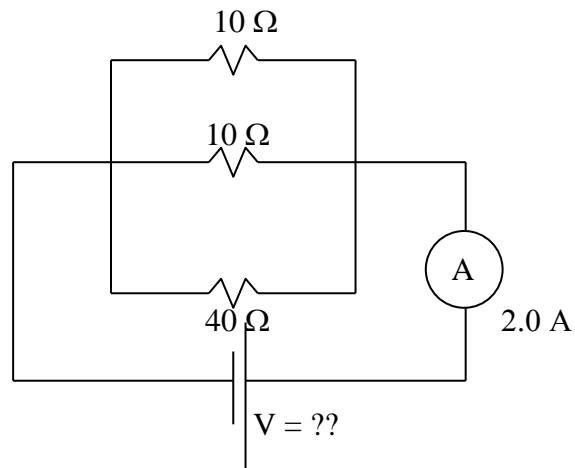
3. Two resistors are connected in series. The total current is 0.500 A. The potential difference at the resistors is 2 V and 5V, respectively. Find R_1 and R_2 .

4. Find the missing voltage and resistance.

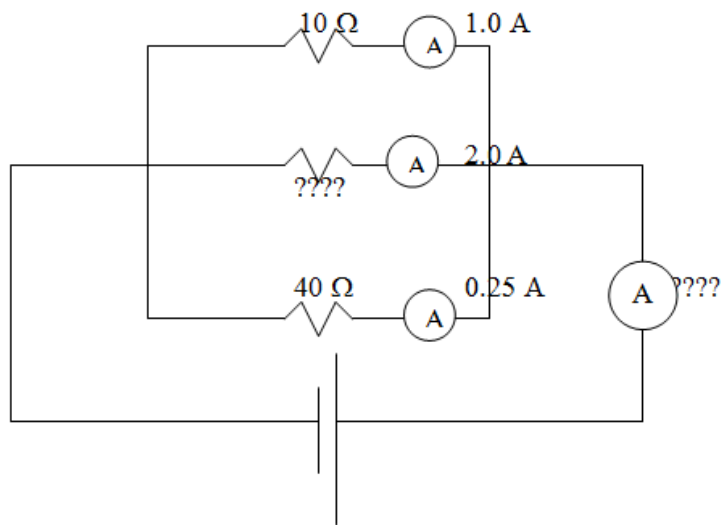


Material World: Electricity

5. Find the missing voltage.



6. Find the missing resistance, the total current, and the missing voltage

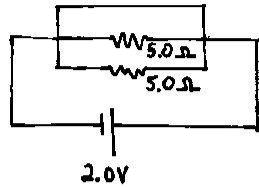


7. a. In a series circuit, what measurement is constant at each resistor?
b. In a parallel circuit, what measurement is constant at each resistor?

Material World: Electricity

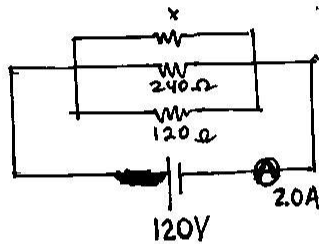
STE's Circuit Subtleties

① a) What is the total resistance of this circuit? _____ Why? _____



b) Can you show why algebraically?

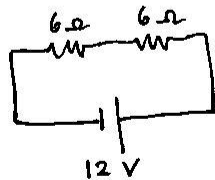
② a) Penelope's Question: find the missing resistance, x .



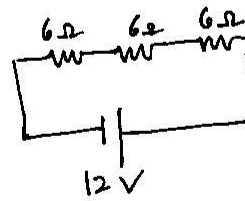
b) How you would you solve for x using R_{eq} (total resistance in parallel)?

③ a) What happens to the current (calculate in each case) when you connect an additional 6Ω resistor to the circuit.

Case 1

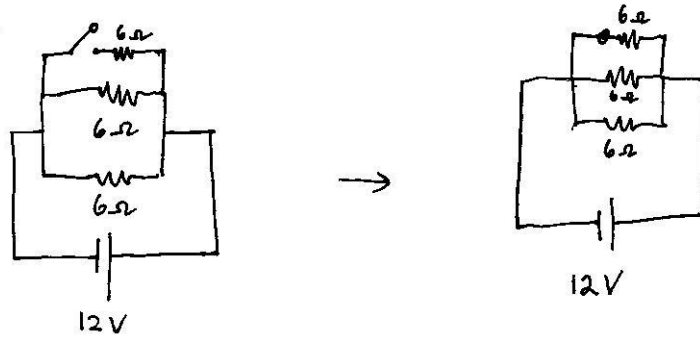


→



Material World: Electricity

b) Case 2



c) How much current does each 6Ω resistor receive (before & after)?

④ Solve for V using the fact that $1\Omega = 1 \frac{J \cdot s}{C^2}$. Show all units & respect sig figs.

$$I = 1.50 \text{ A}$$

$$R = 2.00 \Omega$$

⑤ Flashback subtlety: How do ^{you} show, in a diagram, the difference between a strong & a weak electrolyte?

⑥

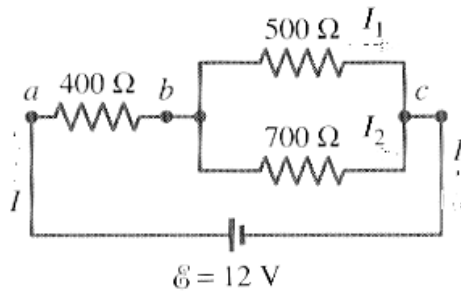
New T-shirt idea:

YOU

is
mist?

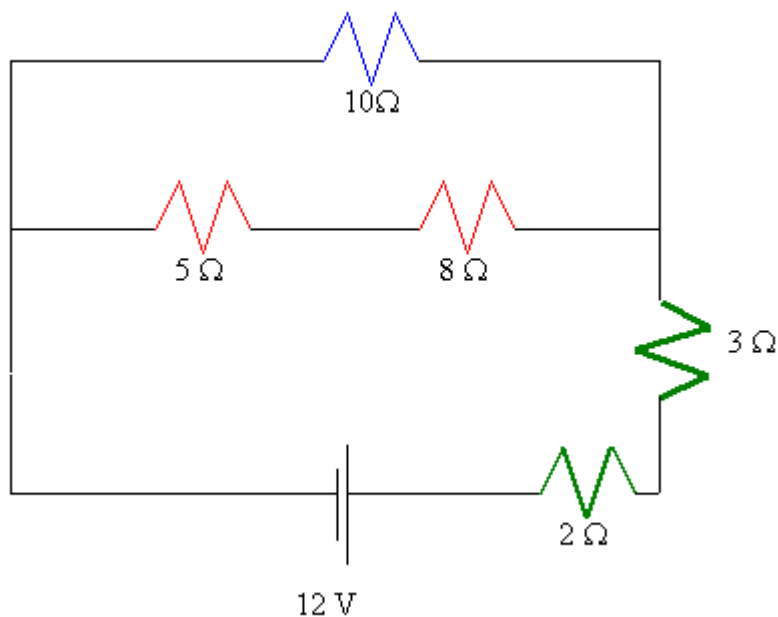
Material World: Electricity

- B- Combination Circuits** combine the features of parallel circuits with those of series circuits. The key to surviving these is to keep in mind the distinctive features of those circuits in mind.



Example 1

- What is the overall resistance of this circuit?
- What is the potential difference measured from *a* to *b*?
- What currents would be measured within the parallel branch? (see diagram for I_1 and I_2)

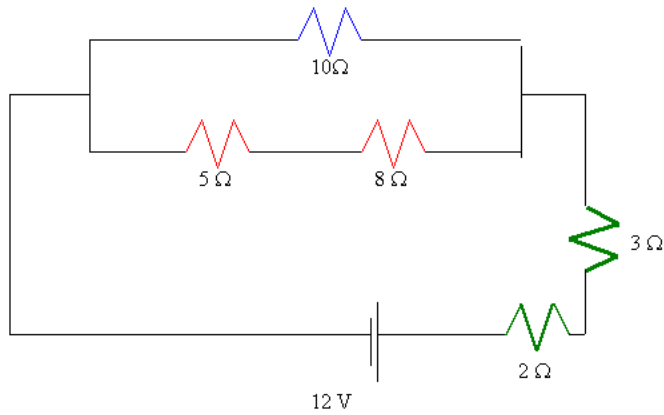


Example 2

- Find the total current in the following:

Material World: Electricity

First, we'll redraw the circuit to make sure we realized that the 5 and 8 Ω resistor are in series, but they in turn are in parallel to the 10 Ω resistor. The parallel branch is then series with both the 3 and 2 Ω resistors.



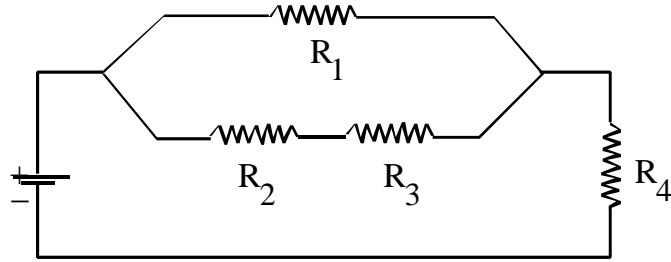
- b. What is the voltage drop across the 8 Ω resistor?

Example 3 Connect four 5 Ω resistors in such a way that their total resistance is 5 Ω .

Material World: Electricity

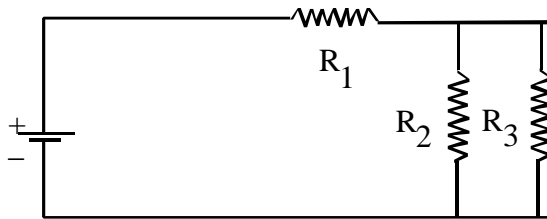
Exercises

1. An electric circuit is illustrated below.



$R_1 = 4\Omega$
$R_2 = 6\Omega$
$R_3 = 6\Omega$
$R_4 = 6\Omega$

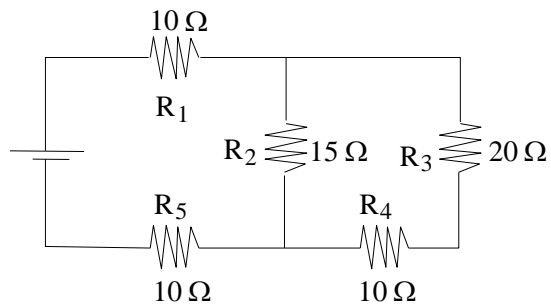
2. What is the equivalent resistance of this circuit?
An electric circuit is illustrated below.



$R_1 = 15\Omega$
$I_1 = 2\text{ A}$
$I_2 = 1.5\text{ A}$
$V_2 = 90\text{ V}$

What is the value of resistor R_3 ?

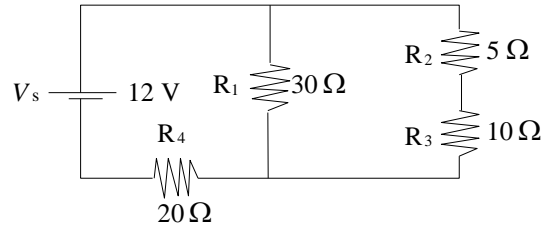
3. A series-parallel electric circuit is illustrated below.



Find R_T

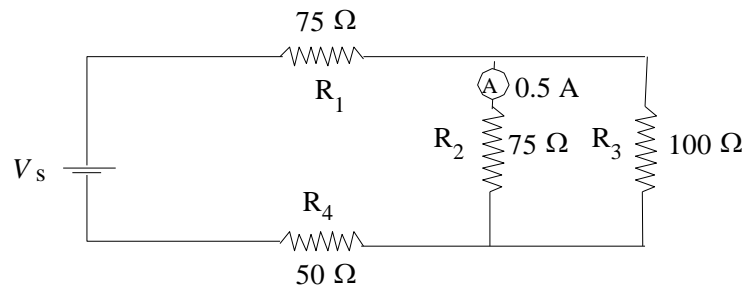
Material World: Electricity

4. A series-parallel electric circuit is illustrated below.



What is the potential difference across the terminal of resistor R_1 ?

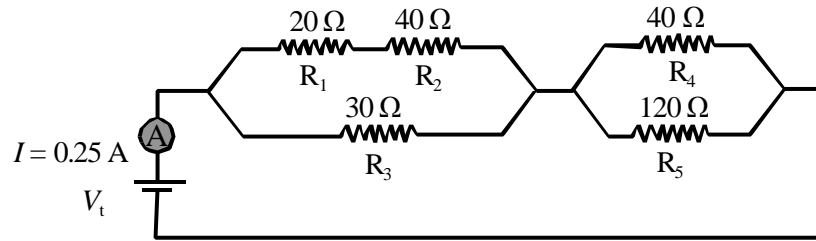
5. A series-parallel electric is illustrated below.



What is the intensity of the current flowing from the power source, I_s ?

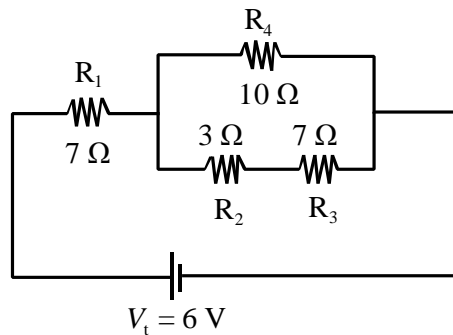
Material World: Electricity

6. The following electric circuit consists of a power supply, five resistors (R_1 , R_2 , R_3 , R_4 and R_5) and an ammeter \textcircled{A} .



The ammeter reads 0.25 A.

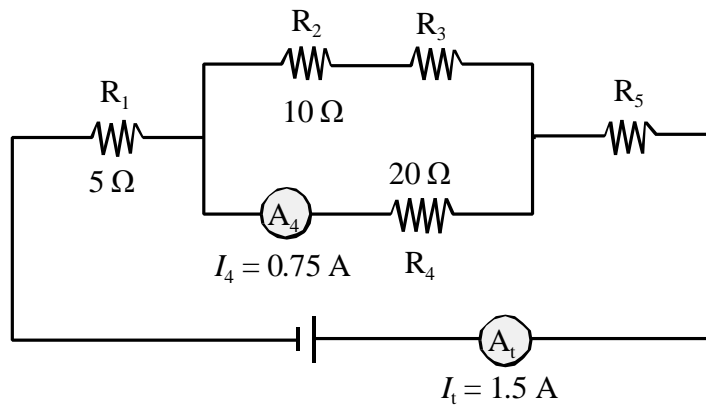
- a. What is the potential difference (voltage), V_t , across the terminals of the power supply?
 - b. What is the potential difference across R_3 ?
 - c. What is the potential difference across R_1 ?
 - d. What current flows through R_5 ?
7. An electric circuit is illustrated below.



What is the current intensity, I , in resistors R_2 and R_3 ?

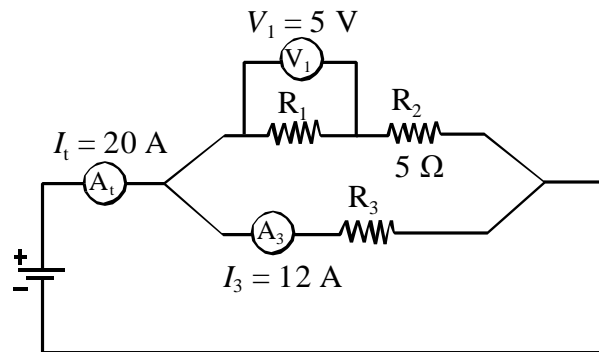
8. The following electric circuit consists of a power source, five resistors (R_1 , R_2 , R_3 , R_4 and R_5) and two ammeters $\textcircled{A_1}$ and $\textcircled{A_2}$.

Material World: Electricity



What is the potential difference (voltage) across the terminals of resistors R_3 ?

9. The following circuit consists of a power source, two ammeters A_1 and A_3 , a voltmeter V_1 and three resistors (R_1 , R_2 and R_3).

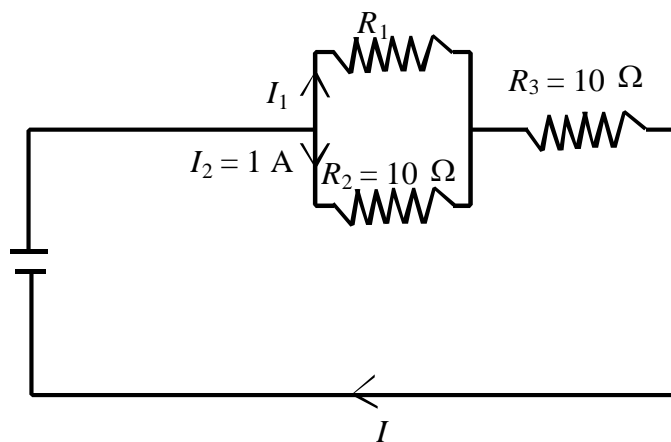


The total current intensity I_1 is 20 A. Current intensity I_3 is 12 A. The potential difference (voltage) V_1 across the terminals of resistor R_1 is 5 V.

What is the resistance of resistor R_3 ?

10. A source with a potential difference of 30 V is connected to the circuit shown below.

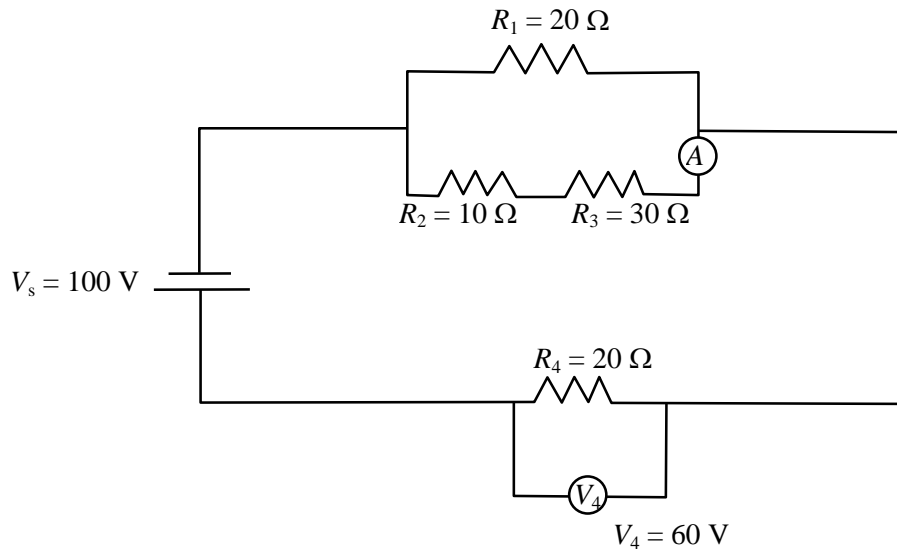
Material World: Electricity



What is the current intensity I across the circuit?

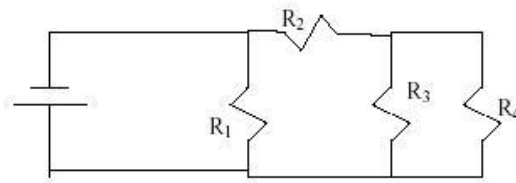
Material World: Electricity

11. The following electrical circuit consists of a power source, four resistors (R_1 , R_2 , R_3 and R_4) and a voltmeter V_4 ($V_s = V_{\text{total}}$).



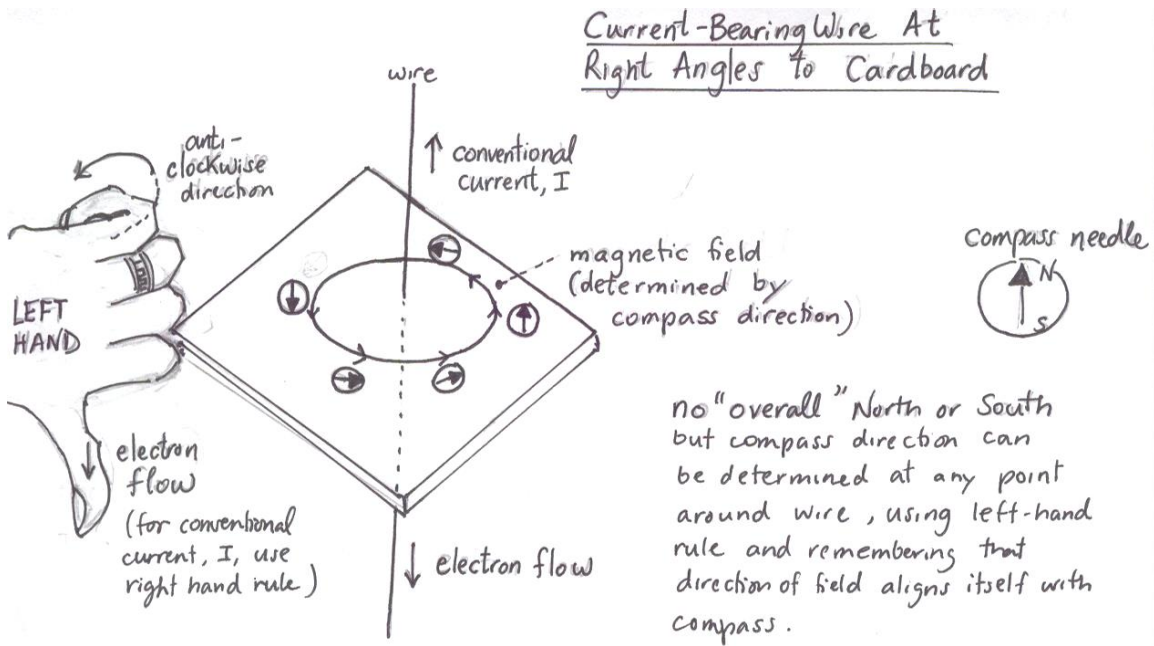
What is the current intensity (I_3) through R_3 ?

12. How can one 25Ω and two 100Ω resistors be connected so that their total resistance is 75Ω ?
13. How can four 1.0Ω resistors and one 2.0Ω combine to give a total resistance of 1.5Ω ?
14. Four identical resistors are connected as shown. If the total voltage is 12V , find the voltage across each resistor.

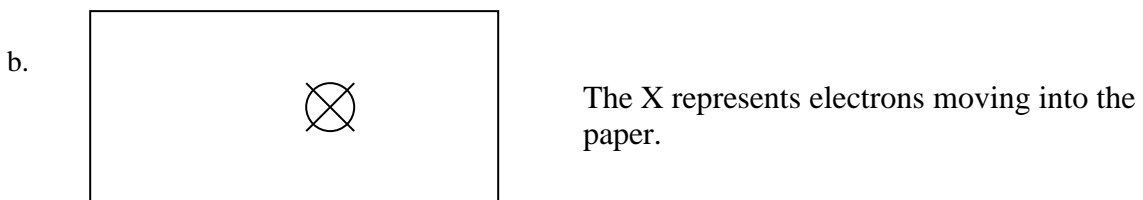
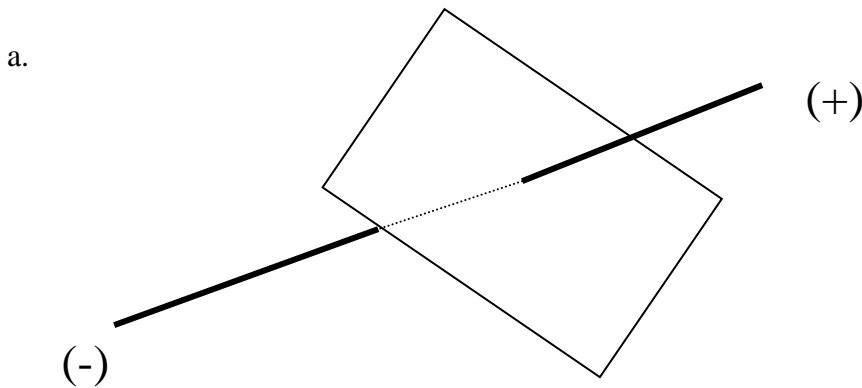


19. Magnetic Field Induced By a Current

If a strong enough current moves through a straight wire it will create a magnetic field perpendicular to the direction of the current. The **first left hand rule** reveals whether the compass direction along the circle would be clockwise or counter clockwise. Notice that the thumb points in the direction of the electron flow.

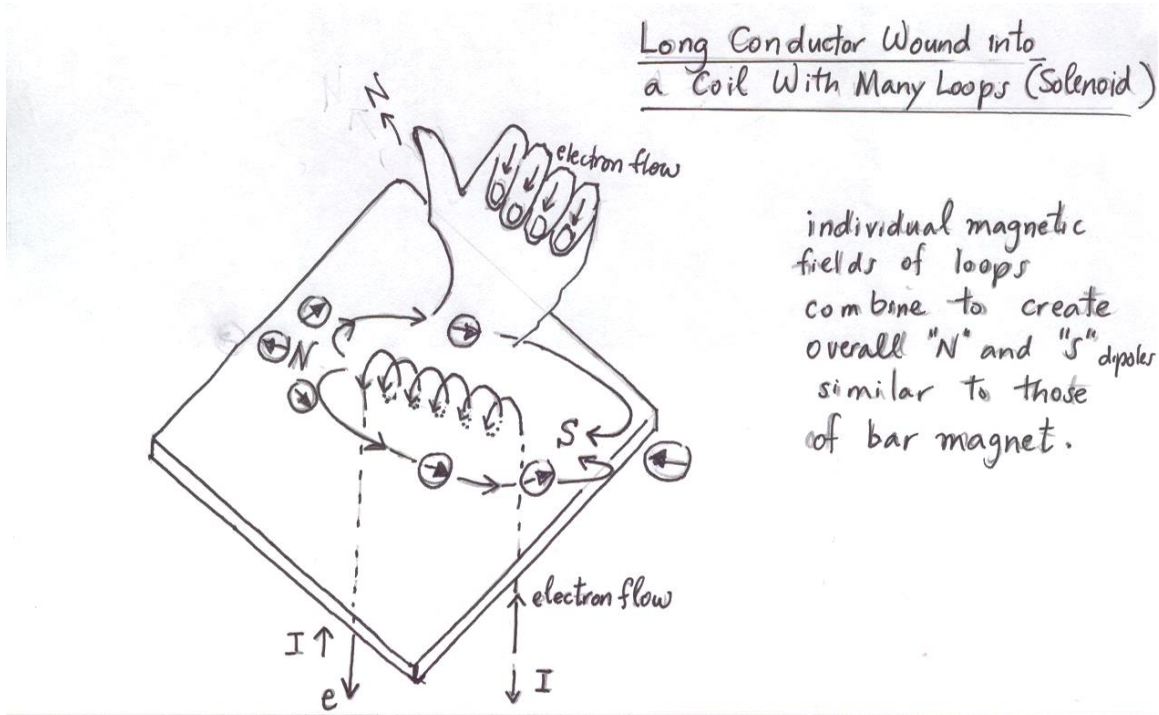


Example 1 Draw the magnetic field in each case.



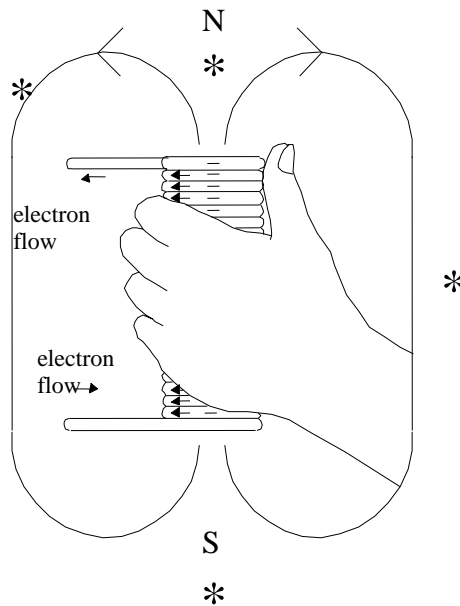
B. Magnetic Field Induced By a Current in a Solenoid

When a solenoid is attached to a strong voltage source, an electromagnet can be created. Each of the circular magnetic field loops combine to create one overall field that resembles that of a bar magnet. The **second left-hand rule** reveals the North end of the magnetic field. Notice that the finger nails are pointing in the same direction as the electrons



individual magnetic fields of loops combine to create overall "N" and "S" poles similar to those of bar magnet.

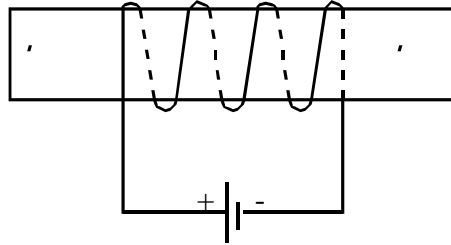
Example 1 Draw what a compass would be behave like all along the magnetic field shown in the diagram. Draw a compass at each position marked by a *



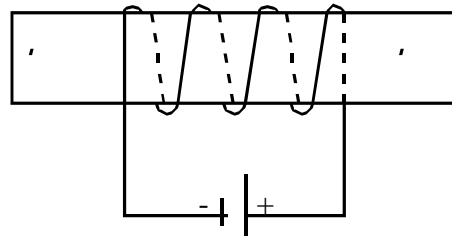
Material World: Electricity

Example 2 Draw the magnetic field around the following electromagnets.

a.



b.



c. Draw a solenoid in which the wire from the (-) end first slips under the coil, and then draw the magnetic field.

B. Factors Affecting Electromagnets

The magnet's strength increases by...

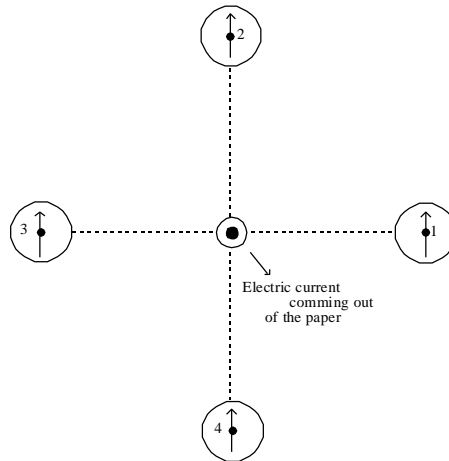
- (1) increasing the current
- (2) increasing the number of loops
- (3) and by placing a ferromagnetic material inside the coil.

Example: Elaborate on each of the above 3 factors.

Material World: Electricity

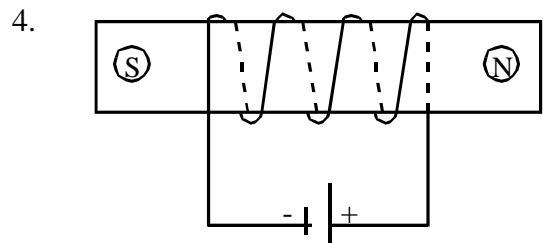
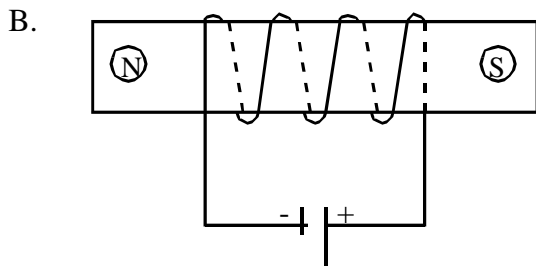
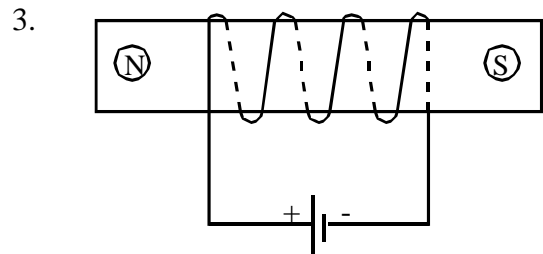
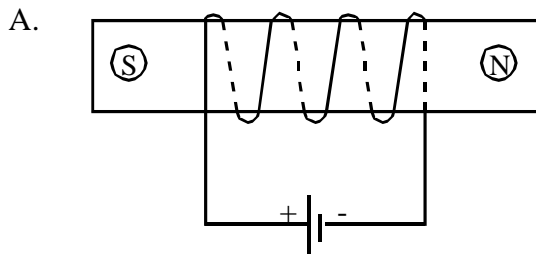
Exercises (exact or varied forms of ministry exam questions)

1. An electric current in a straight wire comes up through a sheet of paper. Four compasses are placed on the paper at different points around the wire.



Which arrow on the diagram correctly shows the direction of the needle of the compass at the location where it is placed?

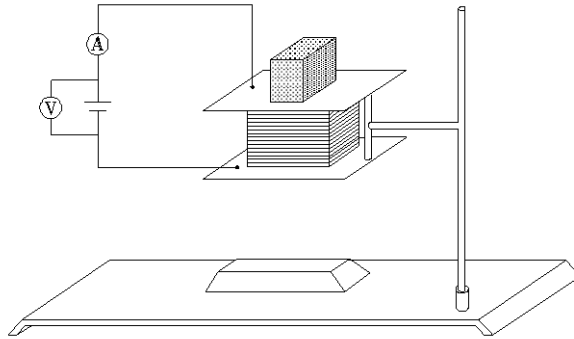
2. The four diagrams below represent electromagnets connected to the terminals of a battery.



- a. In which diagrams are the magnetic poles of the electromagnet correctly indicated? ____ and ____
- b. Redraw diagram (A) with a correct magnetic field.

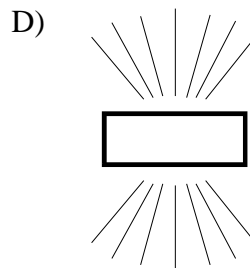
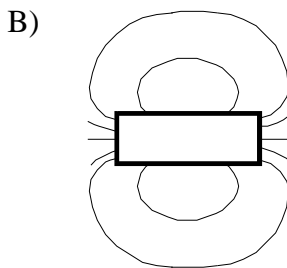
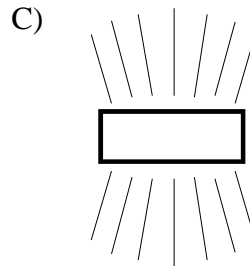
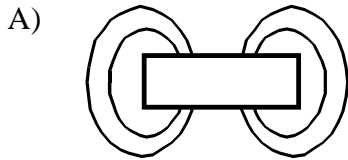
Material World: Electricity

3. Electro-magnets are used in industry to attract metallic objects.



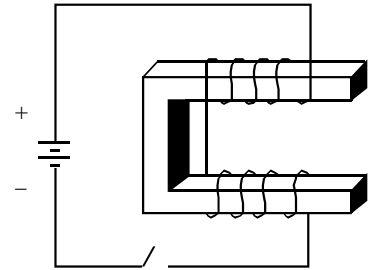
The diagram shows an electro-magnet with an iron core.

- Which of the following changes would increase the strength of the electro-magnet? (yes or no)
- a. Increase the potential difference of the power supply. _____
 - b. Increase the temperature of the core. _____
 - c. Use a core made of copper instead of iron. _____
 - d. Increase the number of turns. _____
4. What does the magnetic field around a solenoid look like?

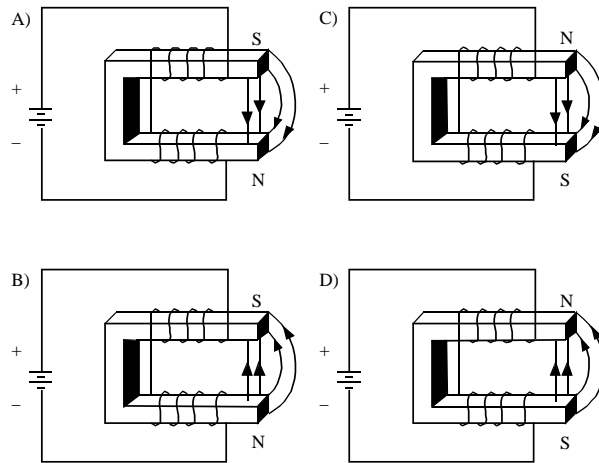


Material World: Electricity

5. The magnet in the diagram is constructed from an iron core and a coil of wire connected to a battery. When the switch is turned off, an electric current circulates through the wire.

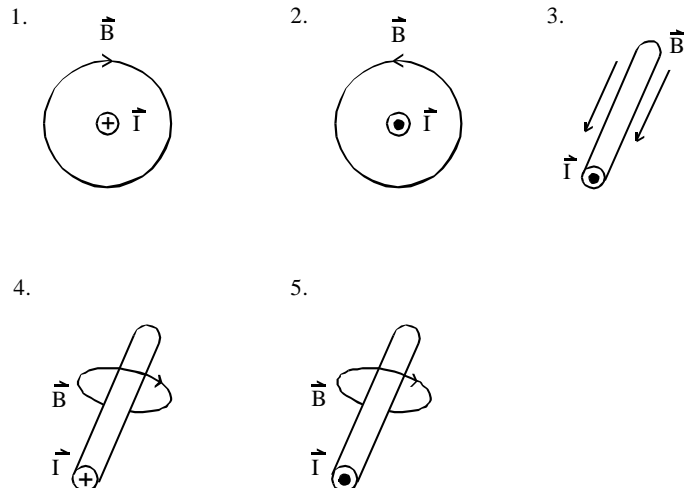


Which of the following diagrams correctly shows the magnetic field of this electromagnet?



6. Study the five diagrams below.

Which diagram(s) correctly show the relationship between a magnetic field and the electric current producing it?



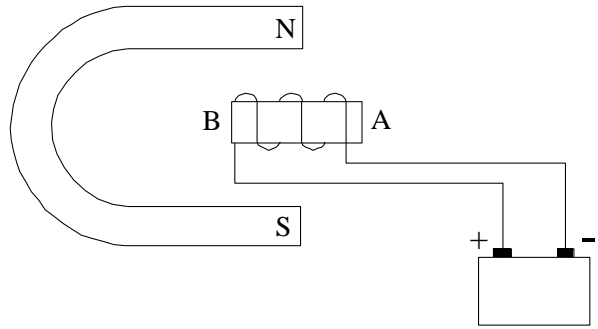
Legend :

● electron flow "out of the paper"

⊕ electron flow "into the paper"

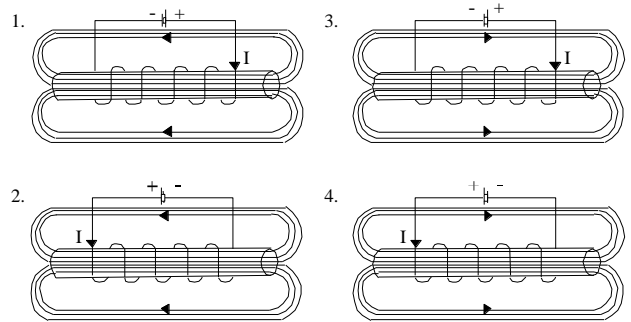
Material World: Electricity

7. A solenoid connected to a battery is placed between the north pole and the south pole of a U-shaped magnet.



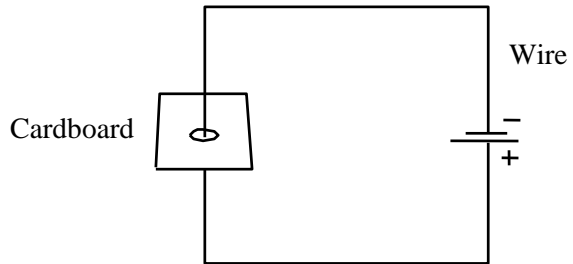
What effect does the magnet have on the solenoid?

8. Two of the following diagrams correctly represent the magnetic field created by an electric current flowing through a solenoid. *(careful: the diagrams' arrows are not representing electron flow but conventional current which ran in the opposite direction)*



Which two diagrams are they?

9. A copper wire with a current flowing through it passes through a piece of cardboard as shown in the diagram to the right.

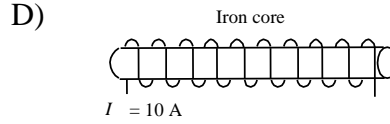
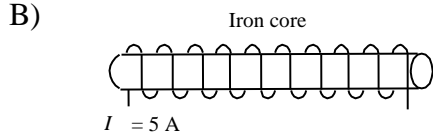
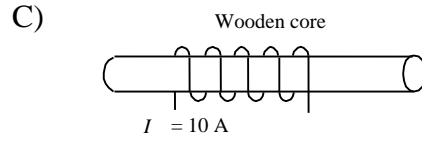
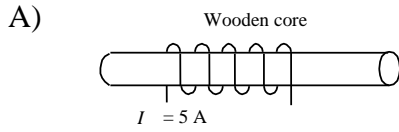


A magnetic compass is placed on the piece of cardboard near the wire. Draw where the compass would be pointing if it was placed at the

- a. 12 o'clock position on top of the cardboard
- b. 3 o'clock position on top of the cardboard

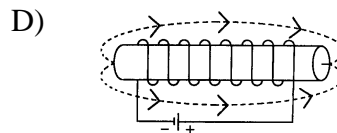
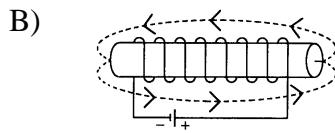
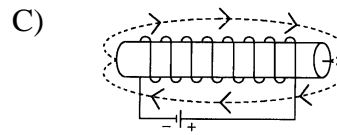
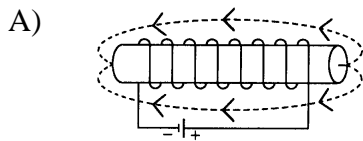
Material World: Electricity

10. Which of the following electromagnets produces the strongest magnetic field?



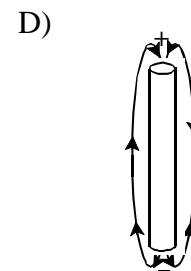
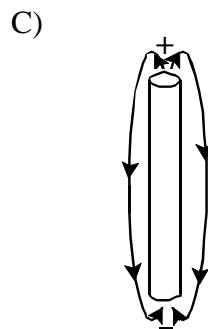
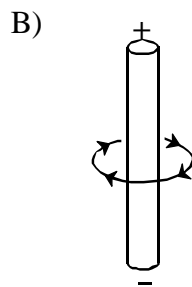
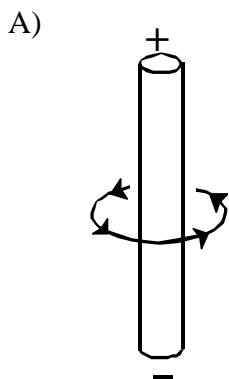
11. An electric current flows through a solenoid.

Which diagram correctly illustrates the magnetic field produced by this solenoid?



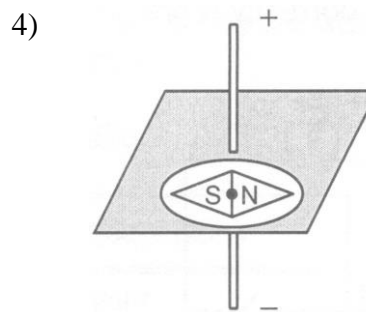
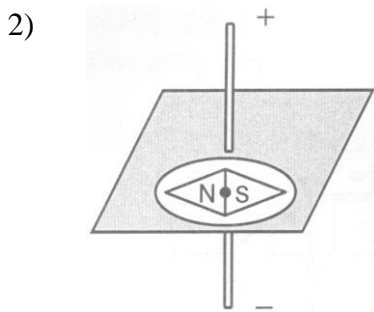
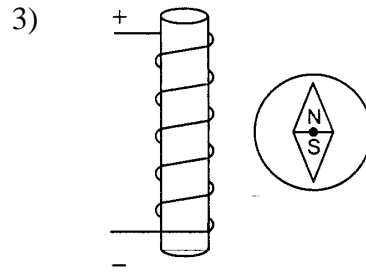
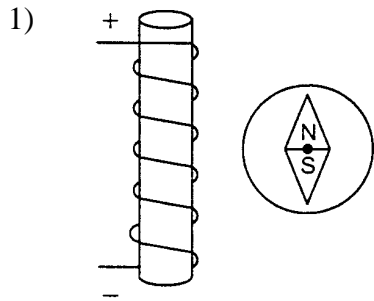
12. An electric current flows through a *straight wire* and produces a magnetic field.

Which of the following diagrams correctly represents this magnetic field?



Material World: Electricity

13. The diagrams below illustrate a compass placed in magnetic field.



Which diagrams show the compass needle pointing in the correct direction?
 ____ and ____

14. A bar magnet is brought close to a current-bearing solenoid.

In which one of the following situations will there be repulsion?

